

Clinton Highway



Community Outreach Gathering Anderson County

July 7th 2016

Clinton Highway Safety Meeting

Stakeholders Meeting April 19th 2016

- Meeting Purpose – Discuss fatal and serious injury crashes and countermeasures

Focus Area and Roadway Improvements

- SR-170 to Anderson / Knox County line
- Add Center Turn lane
- Roadside shoulder

Education and Enforcement

- Joint Effort for Aggressive Enforcement Campaign
- Speeding Issues
- Distracted Driving
- Impaired Driving

Clinton Hwy Projects & Timelines

- April 19, 2016 – Stakeholders meeting with Anderson County Mayor, and Local and State Law Enforcement and TDOT
- **July 7, 2016 – TDOT & Anderson County Community Outreach Gathering**
- TDOT and Anderson County working to finalize Plans for 2017 Resurfacing and Lane Reconfiguration Project
- 2016 – Anderson County Intersection Improvements near Claxton Elementary
- 2017 – Resurfacing Project (Clinton Highway from SR-170 to Knox County Line)
- 2017 – TDOT Intersection Safety Project, State Route 170 (Geometric and Signal Improvements)
- 2018 – Resurfacing Project (Clinton Highway from SR-170 to Carden Farm Road (Anderson County and within Clinton City Limits)

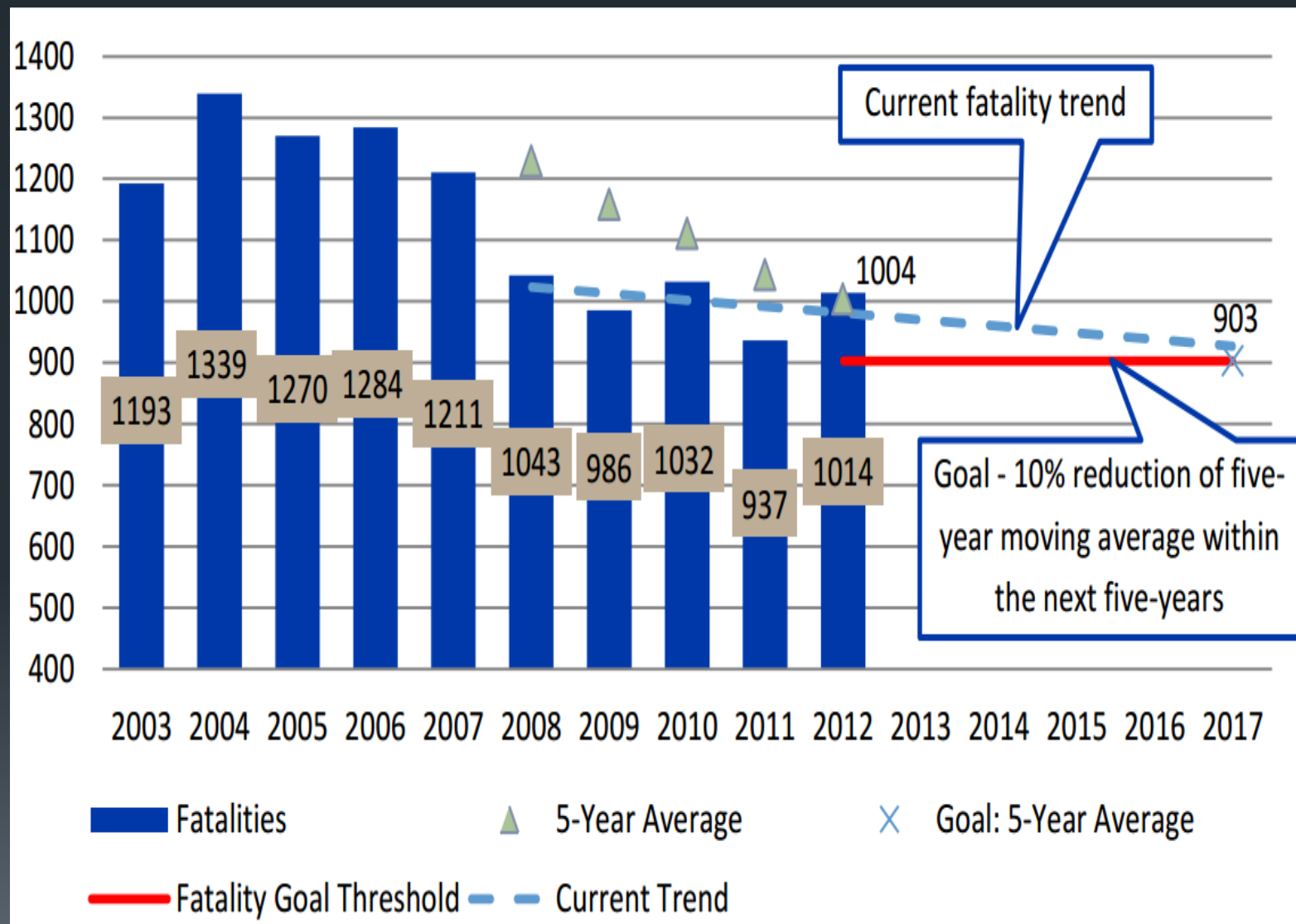
TDOT reviewing opportunities to include a Center Turn Lane

Project Purpose

Safety:

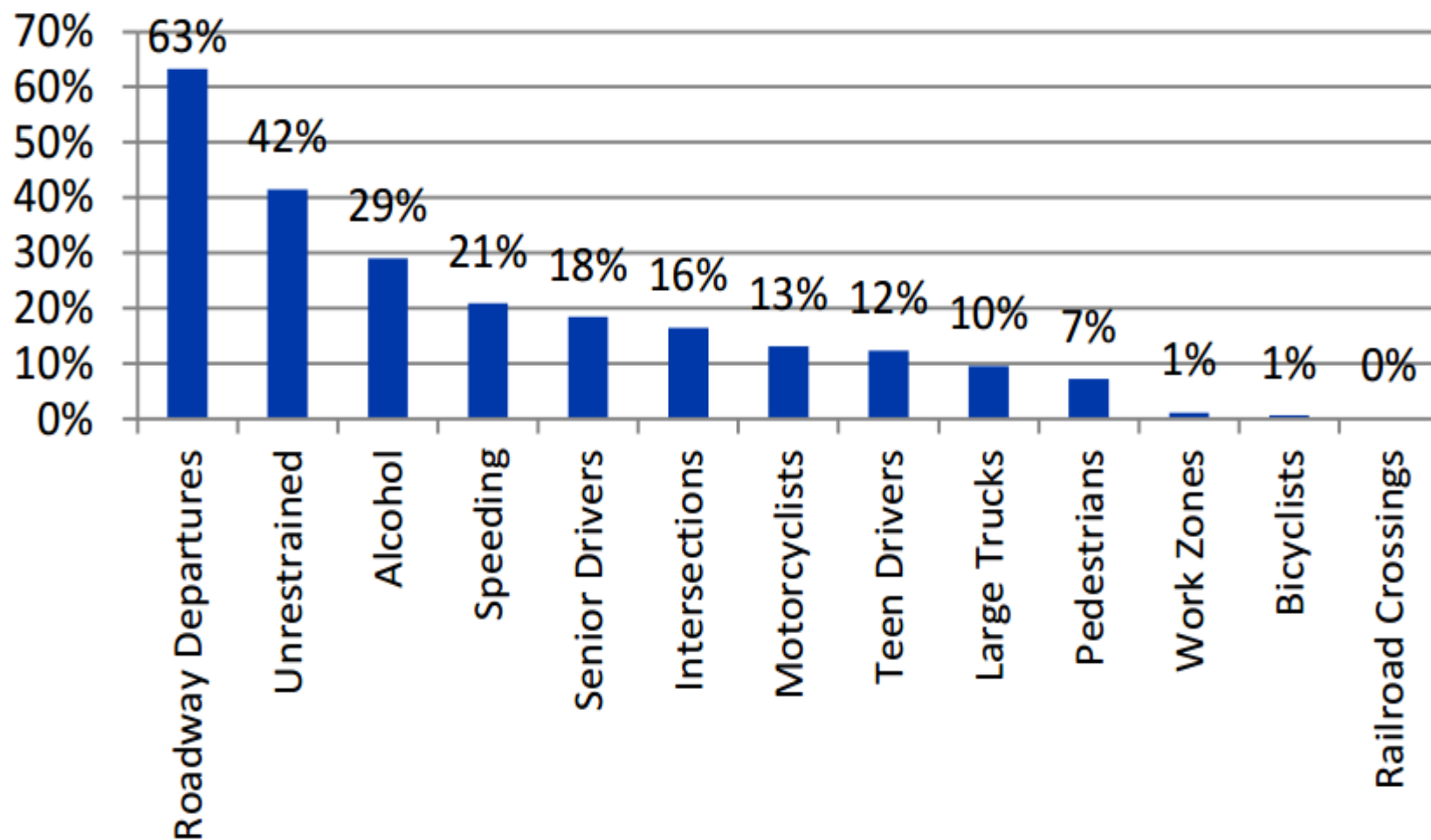
Reduce fatal and injury crashes, improve safety and access along the corridor

Fatalities in Tennessee



Fatalities in Tennessee

Figure 9 - Fatalities Percent of Total by Contributing Factor (2008-2012)



Existing Clinton Highway Typical Section

2.6-mile Section from SR-170 to the Knox County Line

(4) lanes (11 to 12 feet wide)

Limited Shoulders in sections

Several areas with No buffer between opposing traffic

Speed Limit 50 mph

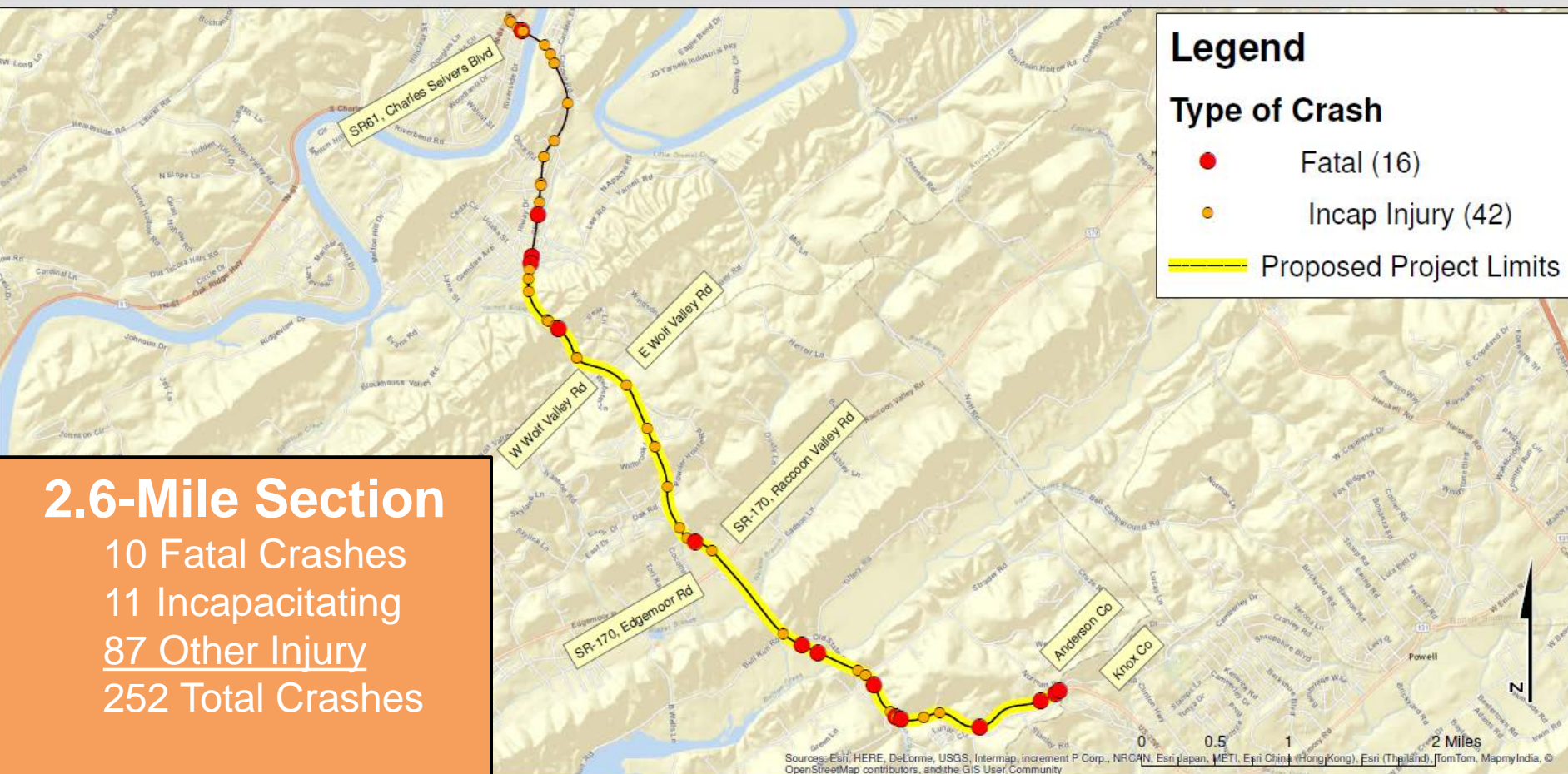
Significant Vertical and Horizontal Curves

Challenging Topography with rock banks and steep slopes



Crash Map

State Route 9 from SR-61 to Anderson / Knox County Line



Prepared By:
TDOT Traffic Office
Region 1



Tennessee



10-Year Crash Map

State Route 9, Clinton Highway
Anderson County
Log Mile 10.630 to 17.940

2006 - 2016 Crash Data
Source: TDOT GIS

Crash Reduction Factors

- Adding a Center Turn Lane
 - Total Crashes – Reduction of 37%

- Adding Paved Shoulders
 - Up to 47% Reduction of roadway departure type crashes, depending on shoulder width

Data from Highway Safety Manual

Concepts for Improvement

Alternative 1

Widen to 5-Lane with Shoulders

Pros

- Provides Efficient Operations
- Improves Future Capacity
- Provides Center Turn Lane
- Improves Travel Time Reliability
- Improves Safety

Cons

- **Cost approximately \$30 million**
 - Volumes do not require concept in near future
 - Competes for funding with other Regional Projects
- Time for Delivery
- Project Impacts
 - ROW Acquisition
 - Environmental
 - Utility Relocations



Typical Section
5 Lane Rural

Cost Information for 5-L Widening Projects

Chapman (Evans to Burnett Ln)
Length – 0.9 Miles
Cost – \$5.9 million

Chapman (Macon to SR-338)
Length – 1.18 Miles
Cost – \$19 million

Average Cost per mile – \$11.4 million
Estimated Cost for 2.6 miles - \$30 million

Concepts for Improvement

Alternative 2

Modified 3-Lane with Passing

Pros

- Improves Safety
- **Cost Feasible = \$900,000**
- Cost included in Resurfacing scheduled in 2017
- No ROW, Environmental or Utility issues
- Provides Center Turn Lane
 - Buffer between opposing traffic
 - Safe Refuge for turning traffic
 - Reduces Rear-end crashes
 - Reduces delays for left-turning traffic
 - Improves access
- Provides 7 ft. paved shoulders
 - Refuge for emergency or disabled vehicles
 - Recovery area for errant vehicle
 - Safe refuge for mail carrier
 - Use for right turning traffic



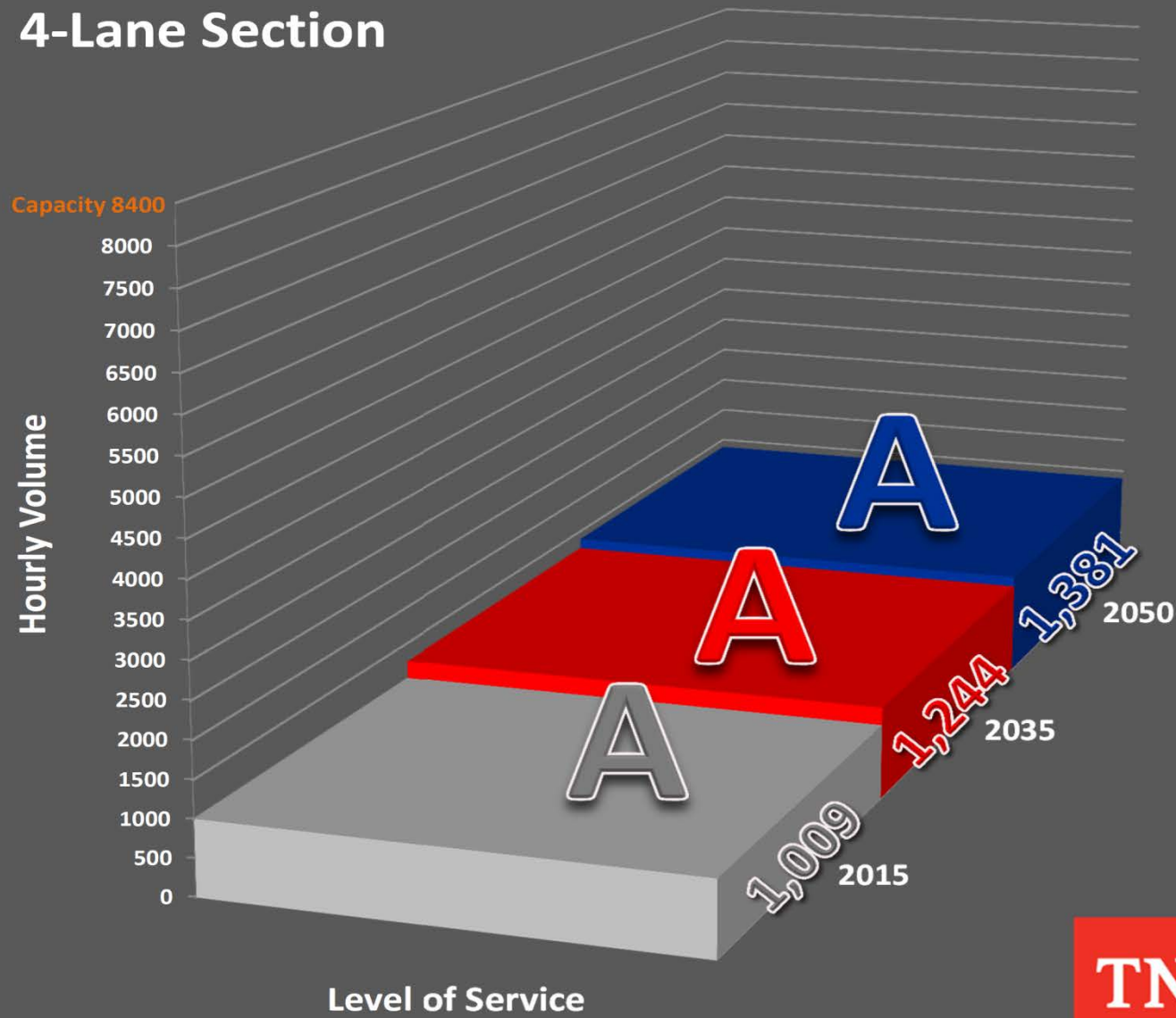
- Provides safe designated passing areas
- Reduces speed differentials
- Eliminates Weaving
- Simplifying road scanning and gap selection for entering vehicles

Level of Service

**Current & Future
Roadway Operations**

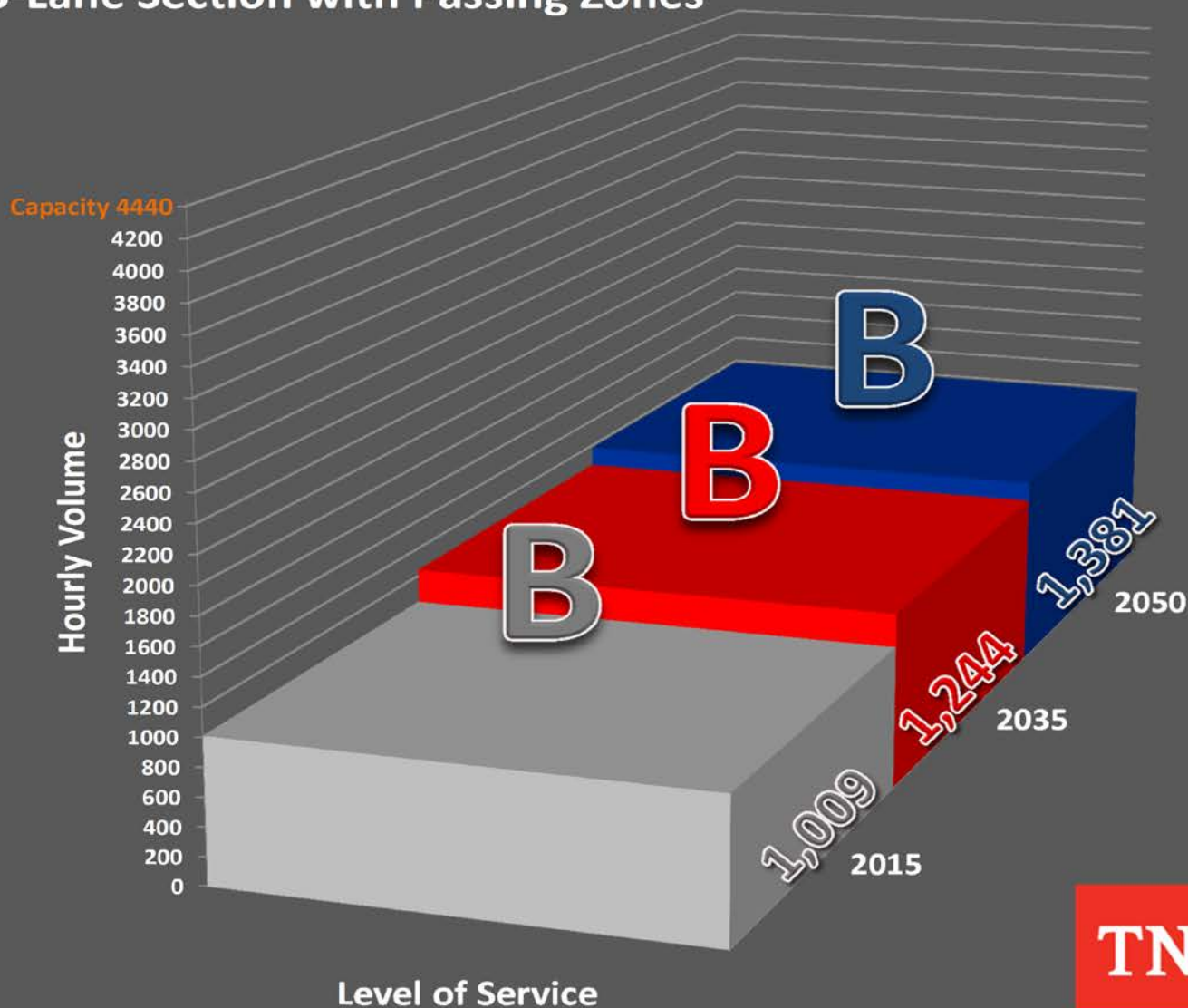
Current Roadway Section

4-Lane Section



Proposed Roadway Section

3-Lane Section with Passing Zones



Beginning near Bull Run Road



Near Turkey Rd and Lonesome Dove Rd



Transition Near Anderson/Knox County line



Summary

There are 3 projects total along Clinton Highway:

1. Resurfacing CY 2017 from SR-170 to Knox County Line
2. Resurfacing CY 2018 from SR-170 towards Clinton
3. Intersection Improvements SR-9 at SR-170 (2 Phases)
 - Anderson Co. is making some intersection improvements near Claxton Elementary School (Coming Soon)
 - TDOT is working on some geometric and signal improvements (Tentative letting CY 2017)



Thank you

Questions & Comments

Tennessee Department of Transportation | REGION 1